

NEWSLETTER

1st Term of the Year
September/October 2025



INTRODUCTION

LFIK, well rooted in the Yûrin neighborhood for 8 years

Established in the Yûrin area for eight years now, LFIK has found in this neighborhood an ideal place to grow and flourish. After several moves, it is here that the school was finally able to settle down for good, warmly welcomed by the members of the neighborhood association. This strong bond - built on respect for Japanese culture and the spirit of living together - continues to grow each year through meaningful exchanges: mutual participation in local events, joint projects, and initiatives to maintain a pleasant and harmonious environment. The neighborhood's support is essential to the life of LFIK and to its long-term stability. It inspires us to keep strengthening our ties and to deepen the school's integration within its local community.

✚ In this newsletter, discover the latest updates on ongoing projects and upcoming initiatives to further reinforce our connection with Yûrin.

Ongoing Projects



The Neighborhood, a real asset for our school



The Yûrin neighborhood is much more than just our surroundings - it's a true partner in the daily life of LFIK. True to our French-Japanese identity, we love building bridges between our two cultures. Local residents take part in French classes, while some parent volunteers share their culinary skills during French cooking workshops. Our Events Committee also delights the neighborhood with homemade crêpes at local festivals! In return, the neighborhood regularly invites us to join its celebrations throughout the year, strengthening this spirit of connection and friendliness.

To preserve this wonderful harmony, a few simple gestures are essential:

- 🚫 Avoid stopping or parking in ways that block the streets.
- P Use nearby paid parking lots when dropping off or picking up children.
- 🤫 Respect the peace and quiet of the area.
- 🚭 Refrain from smoking in public spaces where it is not allowed.
- 🌿 And of course, always leave the surroundings clean after your visit.

These are simple rules, but above all, they reflect mutual respect, which is the foundation of our warm relationship with Yûrin. For those who wish to get more involved, here are the next events to mark in your calendar (also listed in the Agenda section):

- 🌿 Square Weeding – Friday, October 10th: a community action held each school term. Your ideas are always welcome!
- 🏆 Neighborhood Sports Festival – Sunday, October 12th: come take part and enjoy the lively atmosphere.
- 🎭 Yûrin Festival – Saturday, November 1st: a great opportunity to discover local performances and Japanese traditions.
- 📧 Want to get involved or share an idea? Contact Agnès Cattelan (Management Committee) at acattelan@lfikyoto.org



Projects moving forward to build the future of LFIK



Firmly established in both its Yûrin neighborhood and its current facilities, LFIK is now pursuing another essential goal: to strengthen its long-term presence in Japan/Kansai. Several major projects are underway to ensure the school's stability and continued growth.

🏠 "Gakkō Hōjin" Status – A Key Step Toward Official Recognition: This status would officially recognize LFIK as a certified educational institution under Japanese law, ensuring greater stability and access to new forms of support (such as government subsidies and transport discounts). The review of our application is nearing completion: the prefectural representatives and the evaluation committee visited the school on Thursday, September 18th - a very encouraging step! We hope for a positive response by December 2025.

📍 A Future Branch in Osaka - Project Under Exploration: Our team is actively researching potential sites for an LFIK extension in Osaka. While nothing has been finalized yet, momentum is strong! We continue to receive the active support of the Consul and the Ambassador, who regularly remind the Kyoto and Osaka city offices of the strategic importance of strengthening French education in the Kansai region.

💡 Corporate Partnerships to Support LFIK: Beyond financial support, these partnerships foster the school's openness and visibility. Several local companies are already contributing to LFIK's daily life - by donating equipment, funding scientific projects, or hosting student interns. It's a promising dynamic that we hope to expand, particularly with Japanese/Kansai partners.

These projects are progressing step by step - with both prudence and enthusiasm. We'll keep you updated on each development in future newsletters, so stay tuned!



A Look at the School: A Testimonial from Mr. Yamada, President of the Neighborhood Association



«On opening day, the ambassador, the consul, and the head of Kyoto's Board of Education were present. I still remember that day as if it were yesterday.»

I have been the President of our neighborhood for nine years now. The Yûrin Association was founded in 1976, so it will celebrate its 50th anniversary next year. Our philosophy could be summed up as "Yûrin First." Our priority is the safety and well-being of residents. We want everyone to live here peacefully and enjoy community life to the fullest. Each year, we organize several events. In June, we hold a friendly gathering, followed in September by the Seniors' Festival for residents over 70. In October, we have Sports Day (organized by the Association for the Promotion of Sports), and in November, the neighborhood's major festival, the Yûrin Matsuri, followed by an evacuation drill the following weekend. In January, we hold the New Year's ceremony. These are the association's main annual events. This neighborhood is very close-knit. Residents gladly take part in events. Even when there are disagreements, people help one another. This solidarity is precious, especially in times of disaster - being able to rely on your neighbors is essential.

To live well within the local community, it's important to understand the cultural differences between Japan and France, but also to make mutual efforts. There's a Japanese proverb that says, "When in a country, follow the customs of that country." But that doesn't mean forcing yourself to fit in - it means understanding one another and coexisting respectfully. The Lycée Français International de Kyoto (LFIK) is located on the former site of Yûrin Elementary School. Before its arrival, the land had been lent to various organizations, each with its own usage agreement with the City of Kyoto, which made managing the site extremely complicated. When France proposed to establish a school there, we found it very fitting - it had always been a school site, so it made sense. From there, discussions progressed quickly. On opening day, the ambassador, the consul, and the head of Kyoto's Board of Education were present. I still remember that day as if it were yesterday.

The school often invites local residents to its events, and we, in turn, invite school families to ours. This fosters dialogue. Talking together helps prevent misunderstandings. Joint activities, like cleaning up the local park, are excellent opportunities to strengthen ties between residents and school families.

To maintain this good relationship over the long term, we must always keep communicating. Everyone has to make compromises. If people keep everything to themselves, it cannot last. We need to speak openly, consult one another at every stage, and respect shared spaces. That's what I call living together sustainably. I hope LFIK families will fully integrate into local life - participating in events and engaging with residents. If the people of the neighborhood come to say, "It's great that this school is here," then it will be a success for everyone.

Save the Date!

FRIDAY, OCTOBER 10TH

Square Weeding Activity
Meet under the school's covered area at 9:00 a.m. to get equipped. After the effort, enjoy a friendly coffee break together to recharge in good spirits.

SUNDAY, OCTOBER 12TH

Neighborhood Sports Festival
Come join the fun or simply enjoy the lively atmosphere! The event will take place at LFIK from 8:30 a.m. to 2:00 p.m.

SATURDAY, NOVEMBER 1ST

Yûrin Festival
(Neighborhood's Grand Celebration)
Discover Japanese performances and traditions, and take part in the festival games! Held at LFIK from 4:00 p.m. to 7:30 p.m.

SATURDAY, NOVEMBER 15TH

Annual General Meeting
Starting at 9:00 a.m. at LFIK. The Management Committee will present updates on ongoing projects, the financial report, and motions to be voted on. Each family must be present or represented; if you cannot attend, please arrange a proxy.

Call to the community, we need you!

Neighborhood Sports Festival: Sunday, October 12th: Call for Volunteers

In case of hot weather, tents will be set up in the schoolyard to provide some shade. If you're coming to enjoy the festivities, we'd love your help setting them up at the start of the event and taking them down once the activities are over.

Directory of Good Resources: Let's Share Our Tips

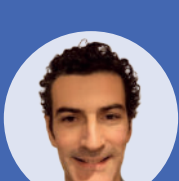
We would like to create a directory of good resources to make life easier for our community. If you have recommendations (doctors, dentists, carpooling, etc.), please share them via this [link](#). We will compile all your suggestions and distribute them to the entire school.

Thank you all for your commitment and continued support for APEK and LFIK. Your attention and commitment are what bring our community to life. Thank you for staying informed, taking part in our projects, and contributing - each in your own way - to making LFIK a place where it feels good to learn and grow together.

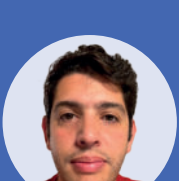
The Management Committee

The Management Committee of **A.P.E.K.** is at your service all year round.

Association des Parents d'Élèves du Kansai



President
Xavier CARCELLE
apek.president@lfikyoto.org



Treasurer
Federico ZYLBERGLAJT
tresorier@lfikyoto.org



Secretary
Kae DEBAYLES-OKI
secretaire@lfikyoto.org



Grégory PURET
gpuret@lfikyoto.org



Romain RALLU
rrallu@lfikyoto.org



Glen BEDJANIAN
gbedjanian@lfikyoto.org



Guillaume LEQUIME
gquime@lfikyoto.org



Agnès CATTELAN
acattelan@lfikyoto.org



Julien BOGAERS
jbogaers@lfikyoto.org